



**RIDDHI SIDDHI**  
RESIDENCY





**RIDDHI SIDDHI**  
RESIDENCY



Building Lobby

# About Riddhi Siddhi Residency

Located in one of the prime locations of Kota, Orilite Lifespaces' RIDDHI SIDDHI RESIDENCY offers you a living experience like no other. Spread across an area of 2.47 acres, it gives you easy and quick access to everything you need. May it be shopping for daily needs, schools, coaching institutes, Railway stations, Hospitals, etc. the area has each and every requirement fulfilled within the nearest perimeters. Meticulously planned & designed, and backed by impeccable amenities, Orilite Lifespaces' RIDDHI SIDDHI RESIDENCY presents the most affordable residential flats in the area along with finance ease, making it an ideal option for investment purposes.

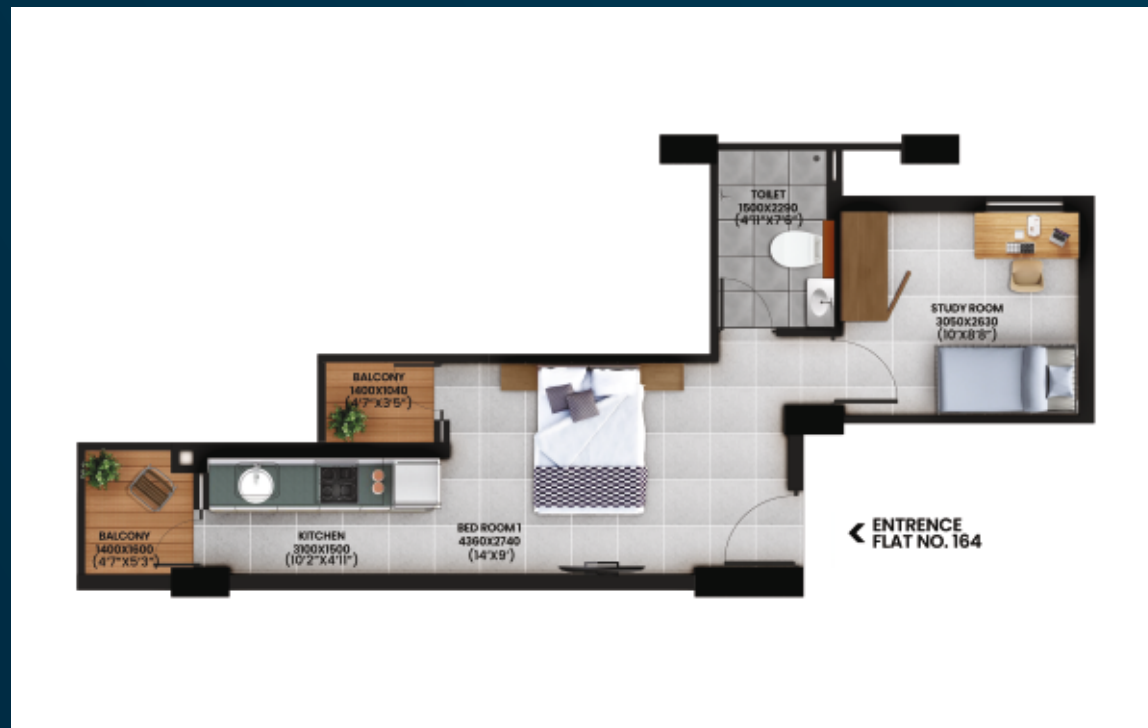
You can enjoy exclusivity at the residency in the form of 2-3 room sets, 3 BHK, and 3 BHK study room arrangements that are expertly crafted with all of your requirements in mind. The residency displays an impressive elevation that declares unwavering quality, integrity, and beauty. Accompanied by top-notch security, blemish-free features, and an alluring environment that you will experience right when you enter, the residency is perfect for people who won't accept anything less than the best.



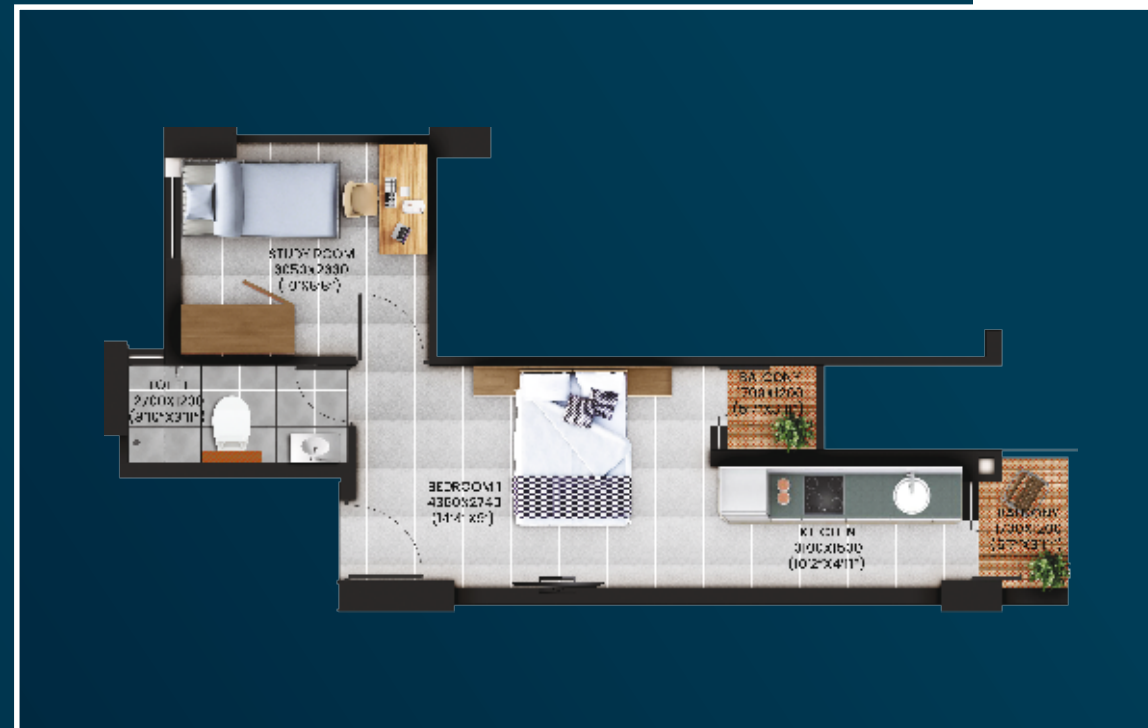
# Connectivity



# Floor Plans - 2 Room Set



Unit	2 Room Set Front
Super Built up	576sq.ft
Flat no.	164-1264



Unit	2 Room Set Rear
Super Built up	544sq.ft
Flat no.	111-1211



Unit	2 Room Set Front
Super Built up	565sq.ft
Flat no.	171-1271



\*Image for representation purposes only

# Floor Plans - 2 Room Set



Unit	2 Room Set Rear
Super Built up	553sq.ft
Flat no.	104-1204



Unit	2 Room Set Front
Super Built up	551sq.ft
Flat no.	168-1268



Unit	2 Room Set Rear
Super Built up	539sq.ft
Flat no.	107-1207

# Floor Plans - 3 Room Set



Unit	3 Room Set Rear
Super Built up	664sq.ft
Flat no.	102-1202



Unit	3 Room Set Front
Super Built up	752sq.ft
Flat no.	170-1270



Unit	3 Room Set Front
Super Built up	636sq.ft
Flat no.	174-1274



\*Image for representation purposes only

# Floor Plans - 2 Room Set



Unit	3 Room Set Side
Super Built up	692sq.ft
Flat no.	176-1276



Unit	3 Room Set Rear
Super Built up	628sq.ft
Flat no.	101-1201



Unit	3 Room Set Front
Super Built up	675sq.ft
Flat no.	173-1273

\*Image for representation purposes only



# Floor Plans - 3 BHK & 3 BHK with Study

Unit	3 BHK + Study Front
Super Built up	1813sq.ft
Flat no.	157-1257

Unit	3 BHK Front
Super Built up	1644sq.ft
Flat no.	156-1256



Unit	3 BHK + Study Rear
Super Built up	1813sq.ft
Flat no.	118-1218

Unit	3 BHK Rear
Super Built up	1644sq.ft
Flat no.	119-1219



\*Image for representation purposes only

# Floor Plans - 3 Room Set



Unit	3 Room Set Rear
Super Built up	731sq.ft
Flat no.	105-1205

# Specifications

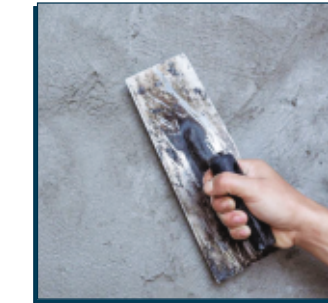


## STRUCTURE

Earthquake resistant R.C.C Frame Structure

## Railings

SS Glass Pipe Railing



## PLASTERING

### Internal Walls

Gypsum/Sand Plaster

### External Walls

Finished with a waterproof plaster



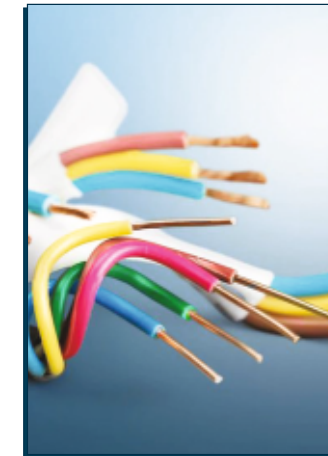
## PAINTING & POLISHING

### Rooms

Premium Grade Plastic paint

### External Walls

Exterior Grade premium quality paint with weatherproof texture



## ELECTRICALS

### Power supply

Insulated multi-stranded copper  
Three phase Power supply  
Wiring concealed fire resistant  
Miniature circuit breakers  
Wires in PVC conduits safety (MCB) in every apartment

### Others

TV & Set-up box



## FLOORING

### Rooms

Premium Grade Vitrified Tiles

### Balcony

Premium Grade Ceramic tiles

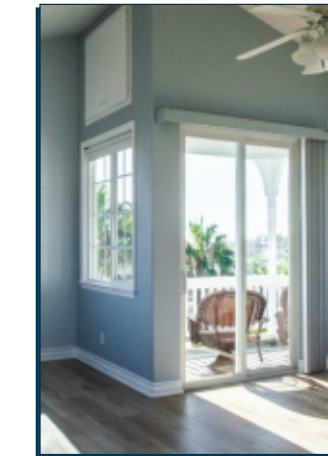
### Toilet

Premium Grade Anti-Skid Tiles

### Lobby

Scratch & Stain resistant

Ceramic tiles premium grade.



## DOORS & WINDOWS

### Windows

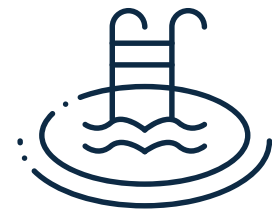
High grade UPVC/Powder coated

### Doors

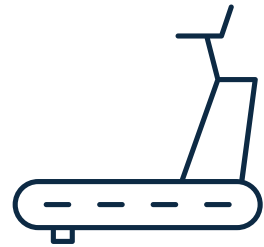
Laminated flush doors  
Ventilators powder coated  
Aluminum sections



# AMENITIES



Swimming Pool



Gym

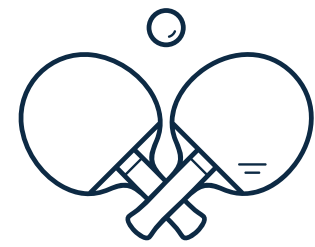
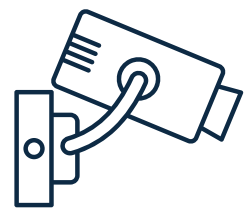


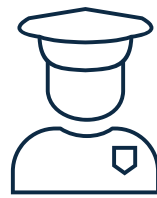
Table Tennis Room



24x7 CCTV Security



Stretcher Friendly Lifts



Security Guards



Fire- Safety





x



# Hello World X Orilite

A modern home waiting for you

Hello World is one of the leading co-living platforms in India for students and working professionals. With presence in 15+ cities, Hello World has transformed large residential units architecturally to budget-friendly spaces rented on a sharing basis.

Orilite lifespaces and Hello World joined hands in 2019 with a mission to provide assured rentals to students, working professionals, and families. Hello World manages 3000+ rooms in Kota and has served 50+ happy owners. The tie-up with Hello World has been quite successful for us as Hello World manages 200+ apartments for Orilite lifespaces'.

With our aim to offer hassle free move-in experience, we offer rental accommodations packed with premium facilities at reasonable prices.

- Two-Room Set assured rental of ₹ 15,000
- Three-Room Set assured rental of ₹ 18,000
- 3 BHK & 3 BHK with study assured rental of ₹ 25,000





# About Orilite Life Spaces

Formed in the year 2014, Orilite life spaces is one of the leading developers in Kota, Rajasthan. As one of the trusted developers in Kota, we are committed to build projects with uncompromising quality and exceptional architecture. We have earned our recognition by undertaking large-scale projects, continuously embracing the latest technology, and employing effective building methods.

Our integrated approach, adaptability, and dedication to quality since our inception have placed us at the forefront of infrastructure development across sectors. We take pride in our reputation for developing grade-A commercial, residential, institutional as well as educational properties. Some of our best-known projects include Meridian Heights, Benchmark City, Landmark Paradise, Gardenia and many more.

We have completed more than 27 projects, covering over 2.5 million square feet of area and 1 million square feet of area is under execution at different stages. Intelligent design and efficient construction are characteristics that bear testimony to the timely completion of our projects. Known for its meticulous design and impeccable construction, Orilite lifespaces has established itself as one of the leading companies in the construction sector.

# Our Group Of Companies



Asia's largest copper-alloy tube manufacturer and exporter



Quarrying and processing company



Leading manufacturer of AAC and building solutions brand with one of the most advanced and largest manufacturing setup



Constructed 2.5 million sq. ft. + of residential and institutional projects using advanced tech



India's leading high-end furniture brand



Rapidly growing ready-to-eat brand of India catering to IndiGo airlines and IRCTC etc.



Leading retail furniture brand for mass India

# PAST PROJECTS

2.5 million sq. ft. area constructed  
Industrial | Commercial | Residential





## RIDDHI SIDDHI RESIDENCY

+91 8239 15 55 55 | info@orilite.com

Site address: Plot no. 1-4, Rajiv Gandhi Extn., Road no. 1, Kota (Raj.)

### Home Finance Partners



Riddhi Siddhi Residency: The project has been registered under Rera registration number Rera/P/2017/169 via [www.rera.rajasthan.gov.in](http://www.rera.rajasthan.gov.in)

Orilite Life Spaces: The company has been registered under Rera Registration number RAJ/A/2021/2109 via [www.rera.rajasthan.gov.in](http://www.rera.rajasthan.gov.in)